

# English For Everyone



Licensed by

Authorised Test Registration Centre

Reg. no: WZ10076



KEMENTERIAN PENDIDIKAN



MINISTRY OF HOME AFFAIRS  
Kahim.s.600 3/16/1044 (9)

**IELTS**



Pearson | PTE

Linguaskill  
from Cambridge

SCAN HERE







## About Us

Launched in 1997, Direct English is highly reputed as one of the most effective English Language programmes for ESL and EFL learners.

Provided by Linguaphone Group, a world leading global language training provider based in the UK, Direct English's unique methodology helps thousands of people learn the vital international language of business and communication-English. And the numbers keep on growing.

Built for people of all ages and walks of life, Direct English offers more choices than any other English language learning system and is aligned to the Common European Framework of Reference (CEFR) for standards of language proficiency.

Unlike others, Direct English works best because it fits around you. The courses are tailored to your abilities and goals, progress at your own pace and adapt around your work and lifestyle commitments, so that you have the flexibility to study just the way you want.



**ESTABLISHED LANGUAGE  
CENTRE WITH A CERTIFIED  
INTERNATIONAL ENGLISH  
LANGUAGE PROVIDER**



**TRUSTED GLOBALLY  
FOR EFFECTIVE  
ENGLISH LEARNING**



**FLEXIBLE, SELF-PACED  
COURSES TAILORED TO  
YOUR LIFESTYLE**

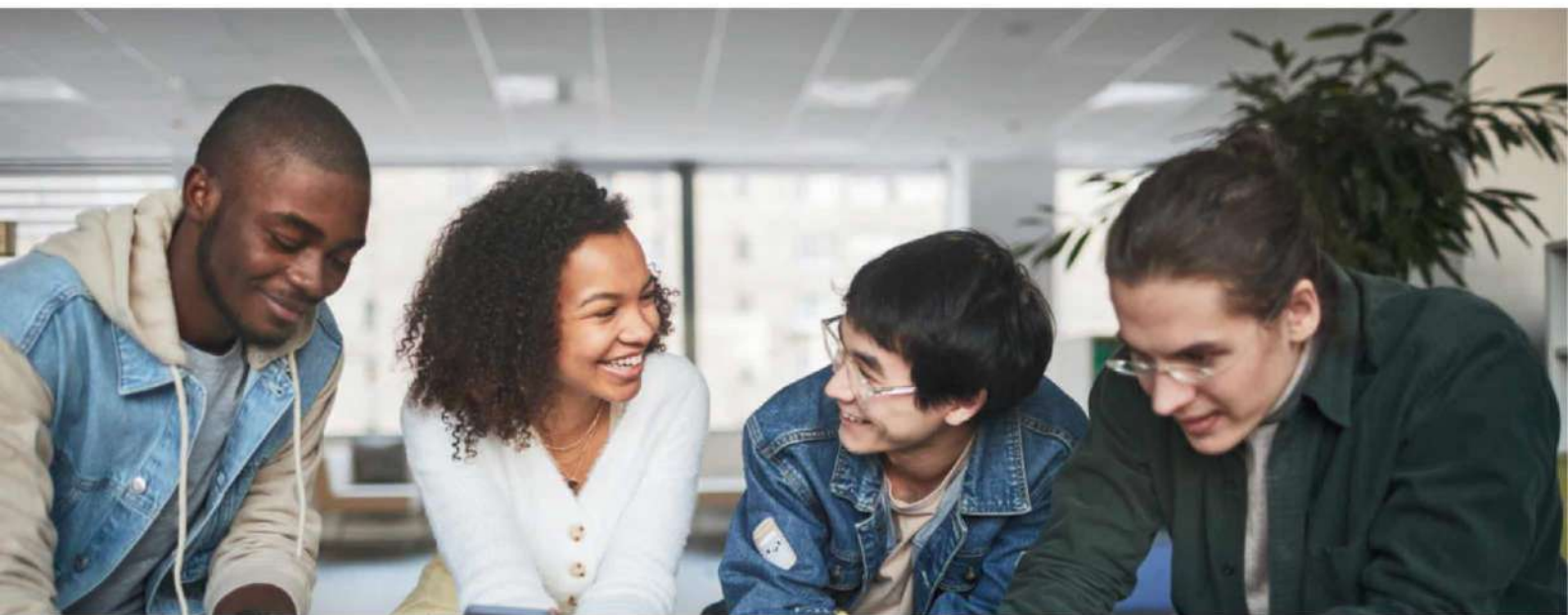


**DESIGNED FOR  
LEARNERS OF ALL AGES  
AND BACKGROUNDS**



**ALIGNED WITH CEFR  
AND OFFERS A UNIQUE  
METHODOLOGY**





## Why Us?

Direct English has a strong global presence in 22 countries across the Middle East, Europe, and Asia, with over 90 centres worldwide. The Direct English International Language Centre (DEILC) is centrally located in Kuala Lumpur, Malaysia, offering easy access to major city landmarks and public transportation.

DEILC provides small class sizes with a maximum of 10 students, dual-teacher instruction, and flexible learning schedules, including online options.

The center caters to a diverse range of learners, from university-bound students to working professionals, using the unique methodology developed by the UK-based Linguaphone Group.

This approach has successfully helped thousands learn English, the key language for global business and communication.



**STRONG GLOBAL PRESENCE, WITH 90 CENTRES WORLDWIDE**



**SMALL CLASS SIZES (MAX 10 PAX.) WITH DUAL TEACHER INSTRUCTION**



**FLEXIBLE LEARNING SCHEDULES INCLUDING ONLINE CLASS OPTIONS**



**CATERS TO A DIVERSE RANGE OF LEARNER FROM STUDENTS TO WORKING PROFESSIONALS**



**ALIGNED WITH CEFR AND OFFERS A UNIQUE METHODOLOGY**





# Original Oxford & Cambridge Syllabus

Direct English is dedicated to providing high-quality English instruction utilising internationally known products, such as Oxford Headway and Cambridge Storyfun, which are trusted by educators all around the world.

Oxford Headway is ideal for teenagers and adults, providing a structured learning experience from basic to intermediate levels. It emphasises the four basic skills—listening, speaking, reading, and writing—with real-life examples to build confidence and communication. Oxford Headway also helps students prepare for globally acclaimed credentials including KET, PET, and FCE, laying a solid basis for academic and professional success.

Cambridge Storyfun makes English exciting and engaging for young learners by telling fun stories, using colourful graphics, and incorporating interactive activities. It improves vocabulary, grammar, and reading comprehension while preparing students for the Cambridge Young Learners English (YLE) exam.

Both curricula include complete teaching tools to ensure uniformity and quality across all classrooms. Direct English provides a dependable, engaging, and effective English learning experience through the use of Oxford and Cambridge materials.

Parents can be confident that their children are studying using materials that promote both academic improvement and a real love of language. Direct English prepares students for success today and in the future.





## Our Programmes

Our programmes are designed to suit both young and adult learners. They focus on building individual confidence and most importantly ensure the learning process is inspiring and fun.

**INTENSIVE  
ENGLISH**

**TEST PREPARATION &  
REGISTRATION:**

- IELTS
- PTE
- LINGUASKILL

**BUSINESS  
ENGLISH**

**YOUNG LEARNERS  
ENGLISH**

**ENGLISH HOLIDAY CAMP:**

- SUMMER CAMP
- WINTER CAMP

## What Sets Us Apart



UK DIRECT ENGLISH &  
OXFORD HEADWAY/  
CAMBRIDGE STORYFUN  
SYLLABUS



DELIVERED WORLDWIDE  
IN MORE THAN 20  
COUNTRIES



HOLISTIC LEARNING,  
FOCUSING ON KEY SKILLS:  
SPEAKING, WRITING, VOCABULARY,  
PRONUNCIATION & COMPREHENSION



SMALL CLASSES FOR  
EFFECTIVE DELIVERY



ACCESIBLE ONLINE  
LEARNING CONTENT VIA  
ANY DEVICE



CAMBRIDGE ASSESSMENT  
ENGLISH AUTHORIZED  
LINGUASKILL TEST CENTRE



CENTRALLY LOCATED  
IN KUALA LUMPUR:  
EASY ACCESS TO PUBLIC TRANSPORT







# Our Programmes

Our programmes are designed to suit both young and adult learners. They focus on building individual confidence and most importantly ensure the learning process is inspiring and fun.



SOCIAL ACTIVITIES



PLACEMENT TEST



ORGANIZED CLASSROOMS



CONTENT & MATERIAL



RESTAURANT & CAFE



FREE WI-FI



## Get Certified with UK Linguaskill!

All students who complete each level  
will receive an official  
Linguaskill Completion Certificate  
from the UK.

**Part Time  
English  
Lesson  
Available!**

# Intensive English

Our Intensive English programme is designed to support the development of English language skills for Individuals pursuing their higher education as well as for working professionals.

### INTAKE DATES

First Monday of the week (\*Subject to change)

### CLASS TIME

4 hours per day  
20 hours per week  
80 hours per month

### SESSIONS

Morning - 9.00am to 1.00pm  
Afternoon - 1.00pm to 5.00pm  
Evening - 5.00pm to 8.00pm

*\* Weekend Sessions are also available*

**Beginner**  
Foundation  
& Level 1  
(3 Months)

**Elementary**  
Level 2  
& Level 3  
(3 Months)

**Intermediate**  
Level 4, Level 5  
& Level 6  
(3 Months)

**Advanced**  
Level 7  
& Level 8  
(3 Months)

### PROGRAMME OUTCOME

- Able to effectively communicate and maintain conversations with native speakers
- Able to write thoroughly on most topics using appropriate vocabulary and grammar
- Competent and ready to work or study in university degree programmes in English
- Able to conduct business confidently with native speakers
- Ready to sit for academic tests such as Linguaskill, IELTS or TOEFL
- Maximum of 10 participants per group to ensure personal attention to develop effective conversational skills



# IELTS Test Preparation

The International English Language Testing System (IELTS) Is popularly known as the world's standardized proficiency English test for study, work and migration.

## What Will You Learn & Gain?

Our IELTS Programme equips individual learners with the fundamental skills and strategies needed and focuses on key learning components that include: Reading, Comprehension, Writing, Speaking and Listening. Once learners complete the programme, they will be able to master and attain the IELTS band score they need to fulfill their objectives.

## Entry Requirements

Learners should be either an Intermediate or above to enter into this course.

## Why IELTS

- Smaller & focused classes (Maximum 10 students)
- Highly Experienced and Certified Teachers
- FREE comprehensive materials for Test Strategies and Approaches

## Duration

PROGRAMME	
IELTS	
ONLINE	FACE-TO-FACE
16 hours	40 hours
Free Placement Test 10 Mock Tests Flexible Time Slots	Free Placement Test 10 Mock Tests Flexible Time Slots

*\*Minimum three in a class.*





**24/7 Access  
to PTE  
Academic  
Question  
Bank**

# Pearson / PTE Test Preparation

## Course & Test Fees

PROGRAMME			TEST
16 Hours	30 Hours	40 Hours	4 SKILLS TEST Reading, Listening, Writing & Speaking

### Note:

- General entry requirement into a college / university is CEFR B2 & depends on the study programme
- Weekend sessions are available in both online and face-to-face formats, with an additional hourly fee applied.

## Why Pearson?

- PTE is accepted by governments and universities around the world.
- Celebrate your results typically within 48 hours\*
- 100% online & computer-based test and you have full control of when to take the test wherever you are.
- Build Confidence with our preparation

## Pearson's PTE Global Recognition

- Trusted by 3,500+ universities and colleges globally
- Accepted for visa applications to Australia, Canada, New Zealand, and the UK
- Computer-based tests with results in typically 48 hours

*\*Minimum three in a class. Less than three will be subjected to higher fees.*





# LINGUASKILL By Cambridge

- Modular Skills Testing Truly On Demand
- Free Preparation Materials

## Course & Test

PROGRAMME		ADD ON	TEST
16 hours	32 hours	Online Acces to Linguaskills Materials & Mock Up Test	4 SKILLS TEST Reading, Listening, Writing & Speaking

### Note:

- General entry requirement into a college / university is CEFR B2 & depends on the study programme
- Weekend sessions are available in both online and face-to-face formats, with an additional hourly fee applied.

## Why Linguaskill?

- Most powerful and advanced English competency test developed by Cambridge Assessment English
- Fast, Accurate, Convenient and Easiest English test for university admission and student visa application
- 100% online & computer-based test and you have full control of when to take the test wherever you are.
- Accurate results within 48 hours
- Tests all 4 English skills: Reading, Listening, Writing & Speaking

## Cambridge Linguaskill Global Recognition

- Accepted by over 10,000 organizations worldwide
- Recognized by governments and immigration authorities
- Trusted by universities, colleges, schools, and academic
- Valued by professional and industry associations
- Used by multinational companies and employers

*\*Minimum three in a class.*





# Business English

Our Business English (Direct English, UK) course is tailored specifically for working adults and professionals as well as clients from the corporate sectors. The course is designed to polish and enhance the communication skills of the learners enabling them to use English more competently and professionally in their work environment. There are nine units in the course, covering a wide range of topics that include Presentation, Negotiations, Customer Care, Managing Changes, Team Working and Social English.

Unit 1: Telephoning 1

Unit 2: Telephoning 2

Unit 3: Team Working

Unit 4: Social English

Unit 5: Presentation

Unit 6: Customer Care

Unit 7: Negotiations

Unit 8: Managing Change 1

Unit 9: Managing Change 2 & Report Writing

The course comes with the Business English (Direct English, UK) learning pack that consists of a course book, workbook and audio-video learning materials. Learners are also provided with online learning support materials to help enhance their English proficiency

## Course

### PROGRAMME

16 hours

32 hours

### INTAKE DATES

First Monday of week  
(\*subject to change)

### DURATION

Flexible schedule  
(up to 2 months to complete)

### HOURS

16 hours

### PRE-REQUISITES

- Direct English Placement Test
- Level 3 & above

*\*Weekend sessions also available*

*\*Minimum three in a class.*



"A wonderful stay experience you will remember forever."

## Student Accommodation

At Direct English, Malaysia we find it very important that our learners are comfortable at where they stay which is why we offer one of the best accommodations in terms of quality safety and location.

Our accommodation is within walking distance and has easy access to the popular shopping malls, public transports, restaurants, and many more tourist and local attractions. What's more is that all the facilities are new and each unit are spacious enough to fit up to 6 occupants.

### Facilities

- Swimming Pool
- Gymnasium
- 24 Hour Security
- Wi-fi & TV
- Washing Machine
- Kitchen





# Key Partners & Affiliation



ST. JOHN'S  
INTERNATIONAL  
SCHOOL



UNIVERSITI  
PENDIDIKAN  
SULTAN IDRIS  
اوتونومستي قندديقن سلطان ادريس

SULTAN IDRIS EDUCATION UNIVERSITY



CRESCENDO®  
INTERNATIONAL  
COLLEGE





# Student Testimonials

" My time in the Direct English course was a game-changer. When I first started, I was pretty shy and not very confident, especially when it came to speaking. But with the help of the awesome teachers and fun classes, I started to come out of my shell. One of the best parts was how much my speaking skills improved, and I learned to think in new ways. I also realized how important teamwork and sticking with things are. The Direct English course wasn't just about getting good grades; it helped me grow in so many ways and encouraged me to follow my passions. I'm super thankful for everything I learned there, and I use those lessons every day."

**Mehmet Arkut, Turkey**

Beginner - Preintermediate 2024



" Studying at Direct English has been amazing! The teachers are patient and creative, making every class fun. I've improved a lot in speaking and writing. Highly recommend this wonderful English learning place! "



**Sun Me, China**

Beginner - Elementary 2024

" Since joining the language institute in Kuala Lumpur last November, I have embarked on a truly meaningful journey to improve my English skills. My foundation in English was very weak; when I first enrolled, I could hardly understand the principal's introduction. The reason I chose to study here was the small class size, which allows teachers to closely monitor each student's progress, making it particularly suitable for beginners like me.

What impressed me most was the dedication of my mentors. They didn't just read from their notes; they designed courses around real life, with each class including oral activities. We practiced conversations and honed our thinking skills based on different themes. I noticed a significant boost in my confidence, especially when communicating with people in real life.

For anyone hesitant to start learning English , whether you are a beginner or have higher goals this academy will meet your needs and elevate you. It is more than just a school; it is a place where language comes alive through caring teachers, creative courses, and a community that feels like home."

**Yu Miao (Mia), China**

Beginner - Intermediate 2025



" I'm currently studying at Direct English and really enjoying the experience. The lessons are interesting, the teachers are very supportive, and I can already see improvement in my English. It's a great place to learn and grow with confidence! "



**Umed Khan, Tajikistan**

Intermediate - IELTS Preparation 2025





## Contact Us

We're here to answer your questions and guide you through the journey of joining Direct English International Language Centre. Whether you're a prospective student, a parent, or a partner, feel free to reach out to us.

### Contact Information



**Phone**  
+603 2022 4138



**Fax**  
+603 2022 3118



**Whatsapp**  
+60 12 306 0084  
+60 12 924 4138



**Email**  
info@directenglish.edu.my



**Website**  
www.directenglish.edu.my

### Follow Us



**Facebook**  
www.facebook.com/deilcmalaysia



**Instagram**  
@deilcmalaysia



**Linkedin**  
Direct English International Language Centre

### Office Information

**Direct English International Language Centre**  
3-B, Level 3, Bangunan Ming, Jalan Bukit Nanas  
50250, Kuala Lumpur, Malaysia

#### Office Hours

Monday to Friday: 9:00 AM – 6:00 PM  
Saturday: 9:00 AM – 1:00 PM  
Closed on Sundays and Public Holidays





## Your Pathway to English Language Excellence

Thank you for exploring Direct English Language Centre.  
We look forward to welcoming you to our vibrant  
community where excellence meets opportunity.

**Address** 3-B, Level 3, Bangunan Ming,  
Jalan Bukit Nanas  
50250, Kuala Lumpur, Malaysia

**Phone** +603 2022 4138

**Email** [info@directenglish.edu.my](mailto:info@directenglish.edu.my)

**Website** [www.directenglish.edu.my](http://www.directenglish.edu.my)

